

## Dati Tecnici - Specifications

	cond	comp. W	ABS. W	A / Fuse	Kwh/100Kg	I / h	kg	Lbs	kg	Lbs	Ton CO2 equiv.
E90 A		1593	790	10	17,9	9,71	68	150	76	167	0,72
E90 W		1593	460	10	14,3	52,2	68	150	76	167	0,72



## Produzione Ghiaccio - Ice Production

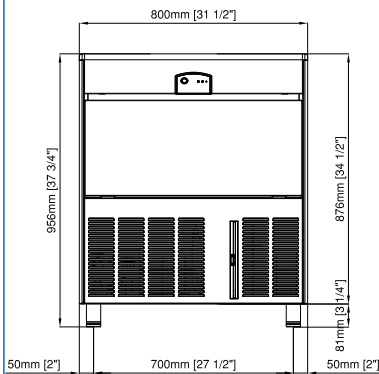
### Raffreddamento ad aria - Air Cooled Unit

Temp. Aria Air Temp.	Temp. Acqua / Water Temp.			
		32°	21°	15°
°C	32°	21°	15°	10°
°F	90°	70°	60°	50°
10°	<b>77</b>	<b>85</b>	<b>89</b>	<b>92</b>
50°	170	187	196	203
21°	<b>72</b>	<b>78</b>	<b>82</b>	<b>84</b>
70°	159	172	181	185
32°	<b>63</b>	<b>68</b>	<b>71</b>	<b>73</b>
90°	139	150	157	161
38°	<b>51</b>	<b>55</b>	<b>57</b>	<b>59</b>
100°	112	121	126	130

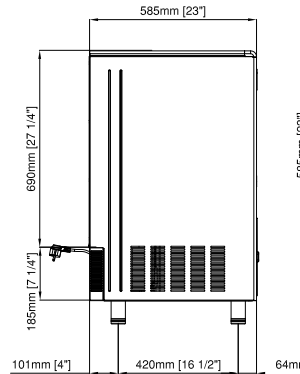
### Raffreddamento ad acqua - Water Cooled Unit

Temp. Aria Air Temp.	Temp. Acqua / Water Temp.			
		32°	21°	15°
°C	32°	21°	15°	10°
°F	90°	70°	60°	50°
10°	<b>77</b>	<b>84</b>	<b>87</b>	<b>90</b>
50°	170	185	191	198
21°	<b>71</b>	<b>77</b>	<b>81</b>	<b>84</b>
70°	156	169	178	185
32°	<b>70</b>	<b>76</b>	<b>79</b>	<b>82</b>
90°	154	167	174	180
38°	<b>66</b>	<b>71</b>	<b>74</b>	<b>76</b>
100°	145	156	163	167

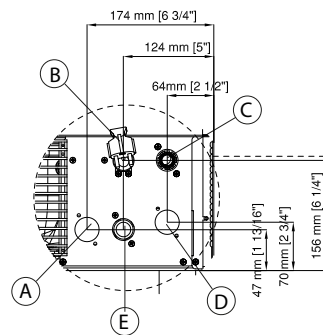
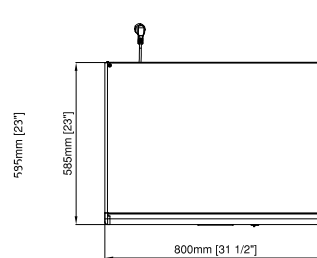
Vista frontale  
Front view



Vista laterale  
Lateral view

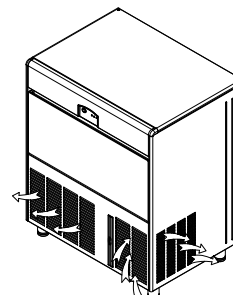


Vista superiore  
Top view



- A** OPTIONAL - Entrata acqua condensatore ad acqua - 3/4"gas  
OPTIONAL - Water inlet connection water condensation - 3/4"gas
- B** Ingresso alimentazione elettrica  
Electrical cable supply
- C** Attacco scarico acqua diam. 20 mm  
Water outlet connection
- D** Uscita acqua condensatore ad acqua diam. 20 mm  
Water outlet connection water condensation
- E** Attacco entrata acqua - 3/4"gas  
Water inlet connect - 3/4"gas

Circolazione aria  
Air circulation



### PANNELLO DI CONTROLLO - CONTROL PANEL

Rosso: Allarmi  
Red: Alarm state

Verde: Stato Macchina  
Green: Machine state



Interruttore On/Off  
Switch On/Off

Pulsante Reset  
Reset Button

### CAPACITA' DEPOSITO - BIN CAPACITY

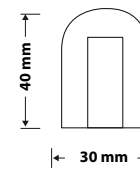
40 Kg - 88 lbs      2352 pcs

### DIMENSIONI - DIMENSIONS

LxPxH (mm)  
800 x 585 x 956

WxDxH (inch)  
31 8/16" x 23 1/16" x 37 10/16"

### TIPO GHIACCIO - ICE TYPE



**17g**  
PESO GHIACCIO  
WEIGHT ICE



**60**  
PZ/CICLO  
PCS / CYCLE

### CONDIZIONI USO-OPERATING REQUIREMENTS



220-240/1/50Hz      R134a GWP=1430

MIN	MAX
10°C (50°F)	40°C (104°F)
5°C (41°F)	35°C (95°F)
- 10 %	+ 10 %
1 Bar (14 psi)	5 Bar (70 psi)